

EDGE™ Light Alarm Clock

ENGLISH

DEUTSCH

FRANCAIS

NEDERLANDS

ITALIANO

ESPAÑOL

ENGLISH

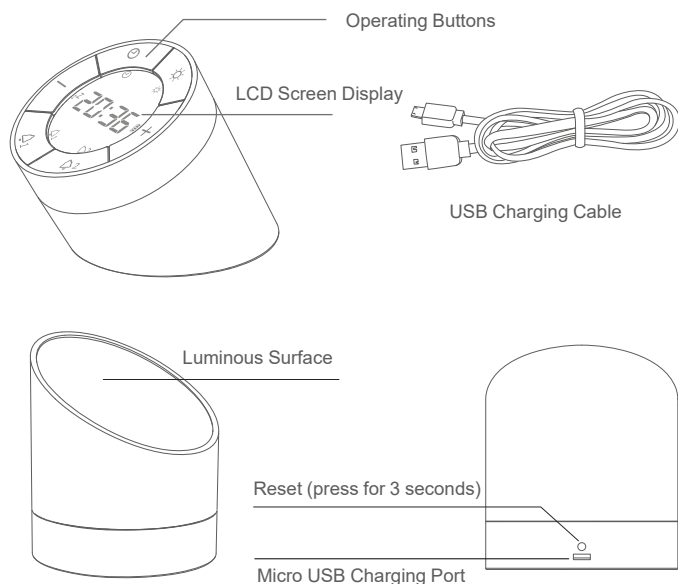
Thank you for purchasing the Gingko Edge Light Alarm Clock. To achieve the best performance of this product, please read this Instruction Manual carefully before use and keep it safe for future reference.

ATTENTIONS

Safety and Product Care Instructions

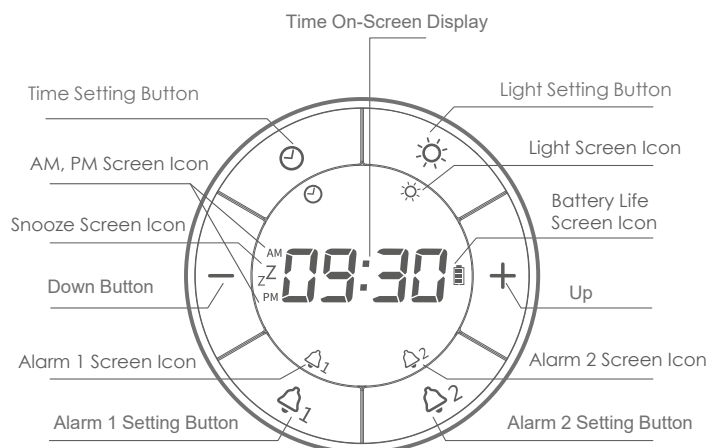
1. Do Not disassemble or modify this product without manufacturer's permission.
2. Do not place this product in an environment with strong humidity or high temperature, such as a steam room or by a fire place; the product can work perfectly fine in the bathroom.
3. Any heavy drop from high place could damage this product, please handle with care and place it at a safe and stable table/desk.
4. The charging plug adapter is not included; please charge this product via any USB charger such as a phone charger or any USB port, as long as the output is not more than 5V.
5. You may press the RESET button to put the clock back to default setting when it's required.
6. Please email to support@ging-ko.co.uk if you have any further inquiries about how to use this product.

2



3

Product Screen Introductions



4

Display Icons Introductions

- Time icon displays when accessed to the time setting menu
- Snooze icon displays when the clock is in snooze status
- Alarm 1 icon displays when alarm 1 is turned on
- Alarm 2 icon displays when alarm 2 is turned on
- Battery life icon stays on permanently to show the current battery life
- Light icon displays when the light function is turned on

PM/AM AM or PM icon shows when the clock is at 12 hours format

5

Setting Buttons Introductions

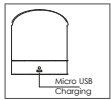
- Press and hold down until a beep to access to the time setting mode and the time icon on the screen will display; quick double-clicks on this button to switch between 12 and 24 hours display format
- Single click to scroll the numbers up or down when accessed to the time setting mode, adjust the ambient light when it is flipped over for lighting mode use or adjust the screen light intensity when it's in clock mode use (the screen light automatically turns on only from 9pm till 7am and can only be adjusted during that time period)
- Single click to view the current alarm time set for alarm 1, double clicks to turn on or turn off alarm 1; press and hold down until a beep to access the alarm 1 setting mode; when alarm 1 is turned on, the alarm 1 icon will display on the screen
- Single click to view the current alarm time set for alarm 2, double clicks to turn on or turn off alarm 2; press and hold down until a beep to access the alarm 2 setting mode; when alarm 2 is turned on, the alarm 2 icon will display on the screen
- A quick double-click until a beep to turn on or turn off the light function; when it's turned off, the light won't turn on the clock is flipped over; when it's turned on, the lighting icon will display on the screen

6

Operating Instructions

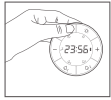
A beep will be responded to any successful double-clicks or long&hold down pressing

1. Production Activation and Charging



This is a power activation product and powered by a 1200mAh integrated rechargeable battery. It can only be turned on when you charge it first. Please fully charge it first before use by connecting the supplied USB charging lead to any USB port such as a USB phone charger or any computer/laptop USB port; When the battery life icon is flashing on the screen, you may need to charge it as soon as possible.

2. Time Setting



Press and hold down button until a beep to access to the time setting mode and the Hour numbers will start flashing; Press buttons +/- to adjust your prefer hour numbers then press button to confirm; the minute numbers will start flashing and repeat the above operation to set your preferred minute numbers. Press button to confirm and exit the time setting.

3. Switch 12/24 Display



Double clicks on the time button to switch the time display between 12 or 24 hours format

4. View current alarm time / turn on or off the current alarm



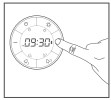
Single click on the alarm 1 button to view the current alarm 1 time set, double clicks to turn alarm 1 on/off; when turned on, the alarm 1 icon will display on the screen; when turned off, the icon will Disappear (Repeat the same operation above for alarm 2)

5. Alarm Setting



Press and hold down the alarm 1 button to access the to alarm 1 setting then the alarm hour numbers will flash; press +/- to adjust the preferred alarm hour and press alarm 1 button to confirm; then the minute numbers will flash; press +/- to adjust the preferred alarm minute and press the alarm 1 button to confirm and exit the setting. (Repeat the same for alarm 2 setting)

6. Screen Light Setting



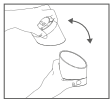
The screen light will automatically turn on between 9pm to 7am. You can adjust the brightness of the screen light by pressing +/- buttons when the product is in clock mode use(when it's not flipped over for light mode use) The screen light can be completely turn off by pressing and holding the - button; to turn it back on, press + button.

7. Ambient/Night Light Setting



Double-clicks on the light button to turn on/off the ambient/night light function. When the product is flipped over for light mode use, pressing and holding down the buttons +/- can adjust the brightness of the light. (+ to increase the light intensity and - to decrease the light intensity)

8. Ambient/Light Light Flip Function



The flip function to turn off or turn on the light only works when the light function has been turned on. To turn it on, double clicks on the light button and the light icon will display on the screen. To turn off the light function, double clicks on the same button again.

9. Snooze Feature Introduction

When the alarm goes off, simply shake it to snooze for 5 minutes or press any button or flip it over to turn it off for the day. You can snooze it as many times as you wish during the beeps but the beep only lasts for 3 minutes, then it will stop.

The Edge Light Alarm Clock is a design patented product from
Gingko Electronics Ltd in the UK and 'the Edge' is a registered trade mark
of Gingko Electronics Ltd

El reloj despertador Edge Light es un producto patentado de diseño de
Gingko Electronics Ltd en el Reino Unido y 'the Edge' es una marca registrada
de Gingko Electronics Ltd

Der Edge Light Wecker ist ein Design patentiertes Produkt von
Gingko Electronics Ltd im Vereinigten Königreich und "The Edge" ist eine eingetragene Marke
von Gingko Electronics Ltd

The Edge Light Alarm Clock è un prodotto brevettato dal design
Gingko Electronics Ltd nel Regno Unito e 'the Edge' è un marchio registrato
di Gingko Electronics Ltd

De Edge Light Alarm Clock is een gepatenteerd designproduct van
Gingko Electronics Ltd in het VK en 'the Edge' is een geregistreerd handelsmerk
van Gingko Electronics Ltd

Le réveil Edge Light est un produit breveté de conception de
Gingko Electronics Ltd au Royaume-Uni et «The Edge» est une marque déposée
de Gingko Electronics Ltd



Gingko Electronics Ltd
Unit C27 Holly Farm Business Park, Kenilworth, United Kingdom, CV8 1NP
www.ging-ko.co.uk
info@ging-ko.co.uk

Printed in China